

## BarrierGuard 600 T3W2

### The free-standing steel barrier / EN 1317



*T3 barriers are used for creating temporary traffic lanes. The narrow design ensures that as much of the carriageway as possible is available to traffic. The T3 barriers have been tested in compliance with EN 1317-2.*

The BarrierGuard 600 is a steel barrier approved to EN1317-2 and suitable for the fast demarcation of temporary traffic lanes. The BarrierGuard 600 has been tested to T3 level and has a working width of 0.8 (W2) and an extremely low ASI of 0.2 (A).





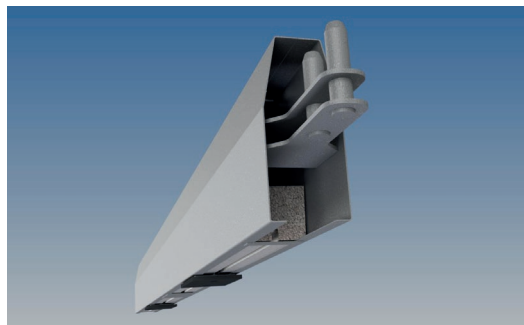
Coupling is quick and easy thanks to the unique (patent pending) pin-hole coupling system. Simply lower the barrier over the previous barrier and you're ready. We call this 'Drop & Go'. This barrier therefore has no loose parts.

The BarrierGuard 600 is the most robust and durable barrier on the market. Thanks to the fully steel exterior, the chance of damage is reduced to a minimum and the life expectancy is more than 20 years.

Its slim 25 cm profile makes optimal use of the available space possible. The barrier is extremely flexible in use, because less than 100 metres erection length is needed and anchoring is unnecessary.

The barrier is supported by durable vulcanised rubber feet that keep the barrier firmly in place and ensure that rainwater can flow away.

Options: Reflectors



## The benefits at a glance:

- + T3 approved in compliance with EN 1317-2
- + W2, ASI 0.2 [A]
- + Drop & Go coupling
- + Most durable barrier on the market
- + Most robust barrier on the market
- + Anchoring not needed
- + Internationally accepted

BarrierGuard 600 – T3 barrier Test results according to EN 1317-2	
Element length	6,0 m
Containment level	T3
Working width	0,8 (W2)
ASI	0,2 [A]
System height	0,60 m
System width	0,25 m
System weight	870 kg
Tested system length excluding terminal elements	96 m
Terminal anchoring required	No
CE certification	Not required

For more information or customised advice concerning the application of vehicle restraint systems along roads, contact Laura Metaal Road Safety on +31 (0) 45 546 88 88, email [sales.roadsafety@laurametaal.nl](mailto:sales.roadsafety@laurametaal.nl) or visit [www.laurametaal.nl](http://www.laurametaal.nl). We will be pleased to help you.